

**C.O.B.I.**

FEB 04 2013

**RECEIVED PCD**

Explanation of photos of Quitslund Heritage Barn

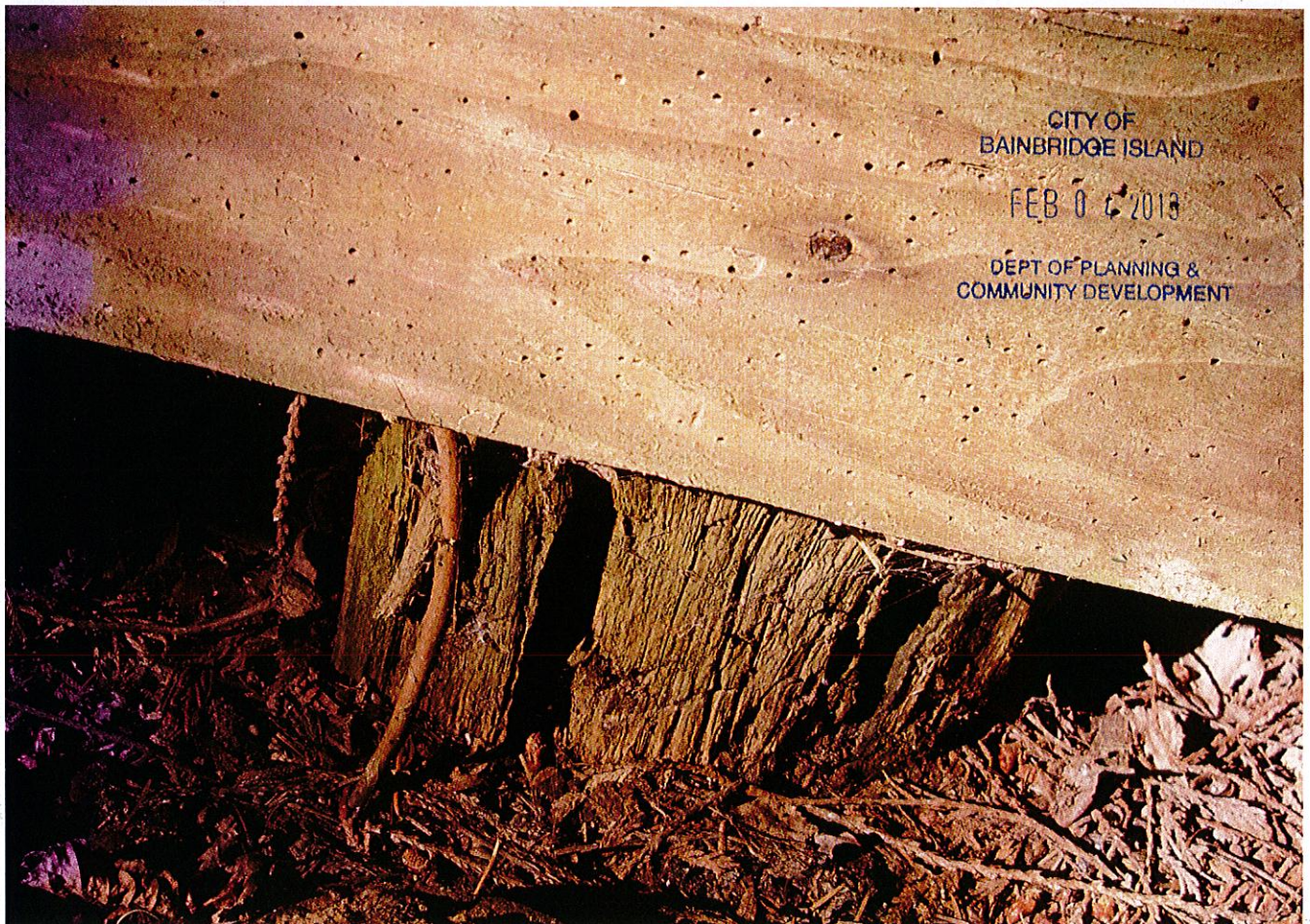
1. Taken from intersection of Sunrise and Torvanger, barn in NE corner. Note piece of plywood behind telephone pole-covers main window repeatedly broken by thieves to get into barn. Original entrance to barn as evidenced by hardware above window for sliding door.
2. Barn supported on posts buried in soil. Most badly deteriorated. Replaced with cement piers.
3. Window mentioned in no. 1 above. Now replaced with window matching window in no. 4.
4. Tongue and groove feature of barn- on 3 sides, eventually will replace on missing side- east side.
5. Original state of floor. In addition to several different heights, rotten areas such as this one which revealed trove of empty bottles.
6. State of barn when work began- a major mess. Ivy vines too.
7. NW corner of barn where flooring seriously deteriorated due to north side of barn slipping 5-7". It was at ground level, now jacked up so outside is visible.
8. "New" flooring visible from current entrance. Flooring salvaged from a forestry barn.
9. Entrance to barn, off of Torvanger. Wood for door, sign and framing around all 7 windows in the barn came from trees my mother planted along the south side of the barn to hide it. (she thought it was ugly) Trees on other sides remain. Trees on south side were growing into barn and compromising it, so I had them cut down and milled some years ago in the event I went ahead with restoration. Note the board running along ground level. Formerly there was some open space and carcasses of various animals were found under the floor. To prevent any squatters, wire netting had been fastened to the board and covered with rocks harvested from my garden. Sign to the right of the door designates this as a Heritage Barn, dating from circa 1905.





Samsung Techwin VLUU L100, M100 / Samsung L100, M100 Focal Length: 6.3mm (35mm equivalent: 35mm) 1/60s f/2.8 ISO: 100

1



Samsung Techwin VLUU L100, M100 / Samsung L100, M100 Focal Length: 6.3mm (35mm equivalent: 35mm) 1/350s f/2.8 ISO: 80

2

CITY OF  
BAINBRIDGE ISLAND

FEB 0 6 2013

DEPT OF PLANNING &  
COMMUNITY DEVELOPMENT



3



Samsung Techwin VLUU L100, M100 / Samsung L100, M100 Focal Length: 6.3mm (35mm equivalent: 35mm) 1/45s f/2.8 ISO: 240

4



Samsung Techwin VLUU L100, M100 / Samsung L100, M100 Focal Length: 6.3mm (35mm equivalent: 35mm) 1/45s f/2.8 ISO: 160





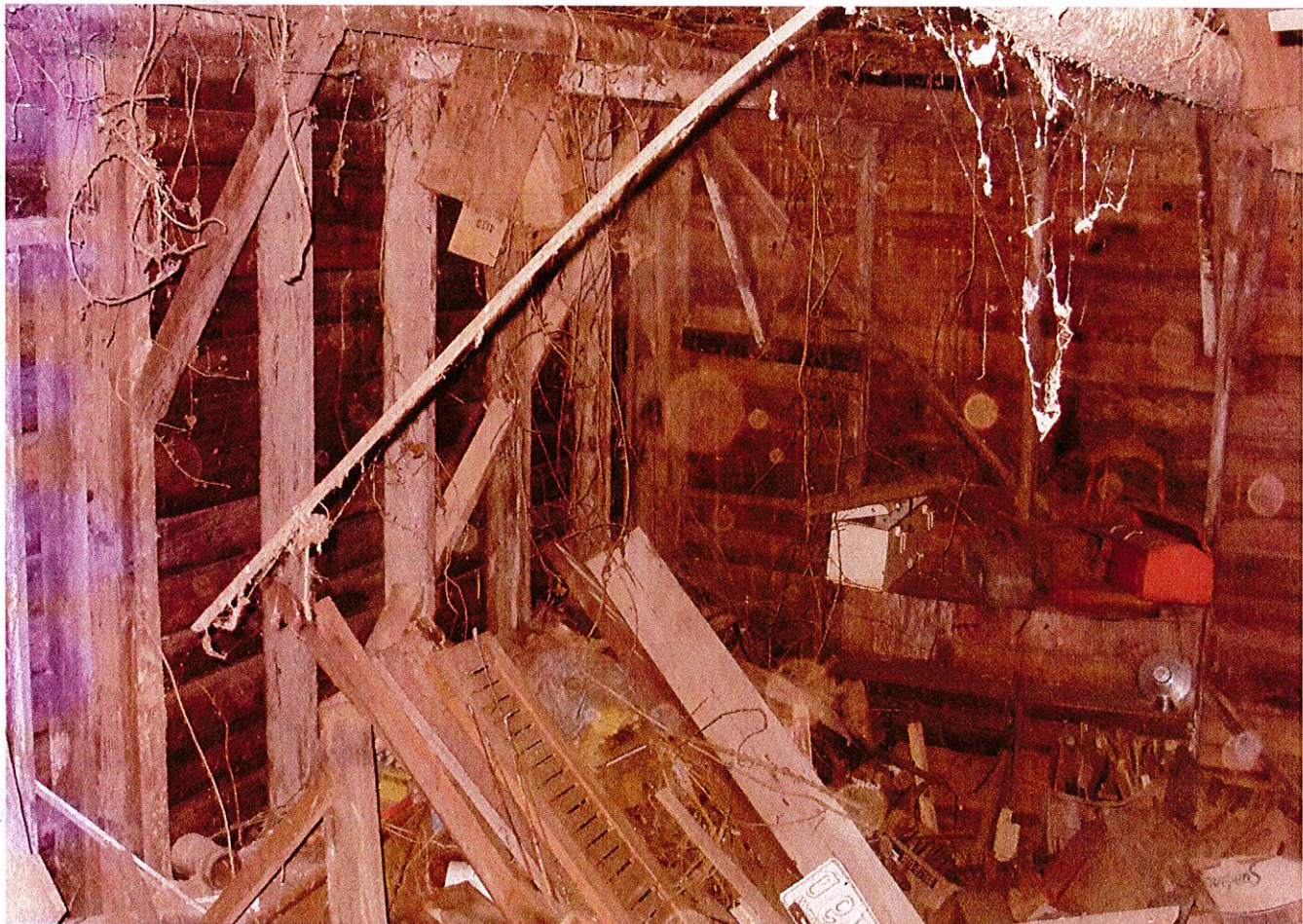
5

CITY OF  
BAINBRIDGE ISLAND

FEB 04 2013

DEPT OF PLANNING &  
COMMUNITY DEVELOPMENT

Samsung Techwin VLUU L100, M100 / Samsung L100, M100 Focal Length: 6.3mm (35mm equivalent: 35mm) 1/45s f/2.8 ISO: 100



6

Samsung Techwin VLUU L100, M100 / Samsung L100, M100 Focal Length: 6.3mm (35mm equivalent: 35mm) 1/45s f/2.8 ISO: 400





7

Samsung Techwin VL00 L100, M100 / Samsung L100, M100 Focal Length: 6.3mm (35mm equivalent: 35mm) 1/45s f/2.8 ISO: 400



8

CITY OF  
BAINBRIDGE ISLAND  
FEB 04 2013  
DEPT OF PLANNING &  
COMMUNITY DEVELOPMENT

Samsung Techwin VL00 L100, M100 / Samsung L100, M100 Focal Length: 6.3mm (35mm equivalent: 35mm) 1/45s f/2.8 ISO: 400

6





Samsung Techwin VLUU L100, M100 / Samsung L100, M100 Focal Length: 6.3mm (35mm equivalent: 35mm) 1/8s 1/2.8 ISO: 80

**C.O.B.I.**  
FEB 04 2013  
RECEIVED PCD