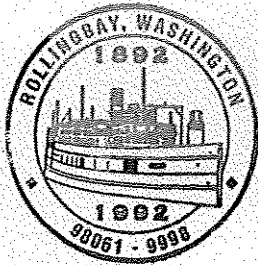


ROLLINGBAY POST OFFICE CENTENNIAL. 1892 - 1992 April 6 - 1992



ROLLINGBAY
CENTENNIAL
STATION
APRIL 6, 1992

PAST AND PRESENT POSTMASTERS

Martin Sonnis
Tom Sivertsen
Charles Carlsten
John J. Arnot

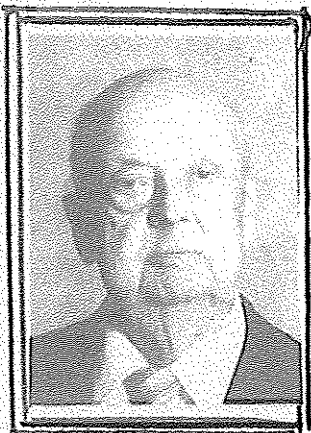
CITY OF
BAINBRIDGE ISLAND

DEC 01 2011

DEPT. OF PLANNING &
COMMUNITY DEVELOPMENT



Lucas A. Rodal
1915 - 1940



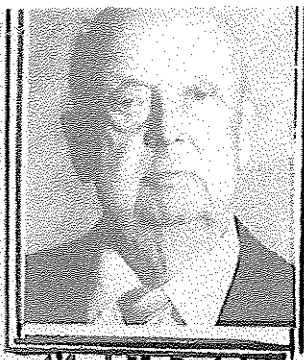
Alfred H. Rodal
1940 - 1973



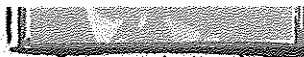
Olga Wells
1973 - 1987

ROLLINGBAY came into being in much the same way as did other communities on the perimeter of Bainbridge Island. Lumbering was the original magnate but the reputation of the GEM OF PUGET SOUND attracted Civil War veteran "homesteaders" and soon immigrants leaving oppressed lands from across the seas. ROLLINGBAY beckoned from Seattle and Ballard and soon relatives from Scotland, Scandinavian countries, Germany and the mid-west took up new life and cleared homesites where once mighty fir and cedar had prevailed..

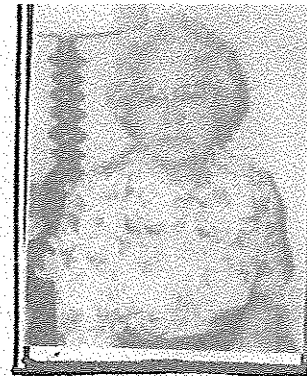
A general store, a church and a steamer landing made up the importance of a township, and to provide contact with the "outside" world for a growing community, a United States Post Office was opened on April 6, 1892. Of the eleven post offices established from May 13, 1858 at Port Madison to Sept-11, 1926 at Moran School only ROLLINGBAY remains open and active besides the main office in Winslow. The 350 current ROLLINGBAY box holders can be a



Alfred H. Rodal
1940 - 1973



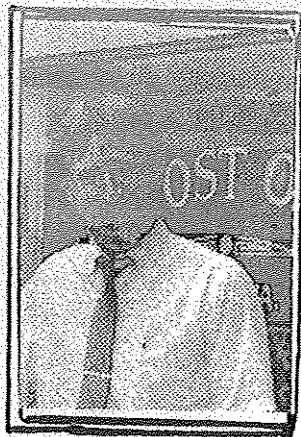
Lucas A. Rodal
1915 - 1940



Olga Wells
1973 - 1987

ROLLINGBAY came into being in much the same way as did other communities on the perimeter of Bainbridge Island. Lumbering was the original magnate but the reputation of the GEM OF PUGET SOUND attracted Civil War veteran "homesteaders" and soon immigrants leaving oppressed lands from across the seas. ROLLINGBAY beckoned from Seattle and Ballard and soon relatives from Scotland, Scandinavian countries, Germany and the mid-west took up new life and cleared homesites where once mighty fir and cedar had prevailed..

A general store, a church and a steamer landing made up the importance of a township, and to provide contact with the "outside" world for a growing community, a United States Post Office was opened on April 6, 1892. Of the eleven post offices established from May 13, 1858 at Port Madison to Sept-11, 1926 at Moran School only ROLLINGBAY remains open and active besides the main office in Winslow. The 350 current ROLLINGBAY box holders can be a proud lot and the little office there is a welcome stop for many who can't resist the gracious service that comes with the smile behind that little window at Postal Code No. 98061.



Marc Bluhm
1988 - 1991



Laura Barnhill
1991 - Present