

# bp Glass Garage Doors

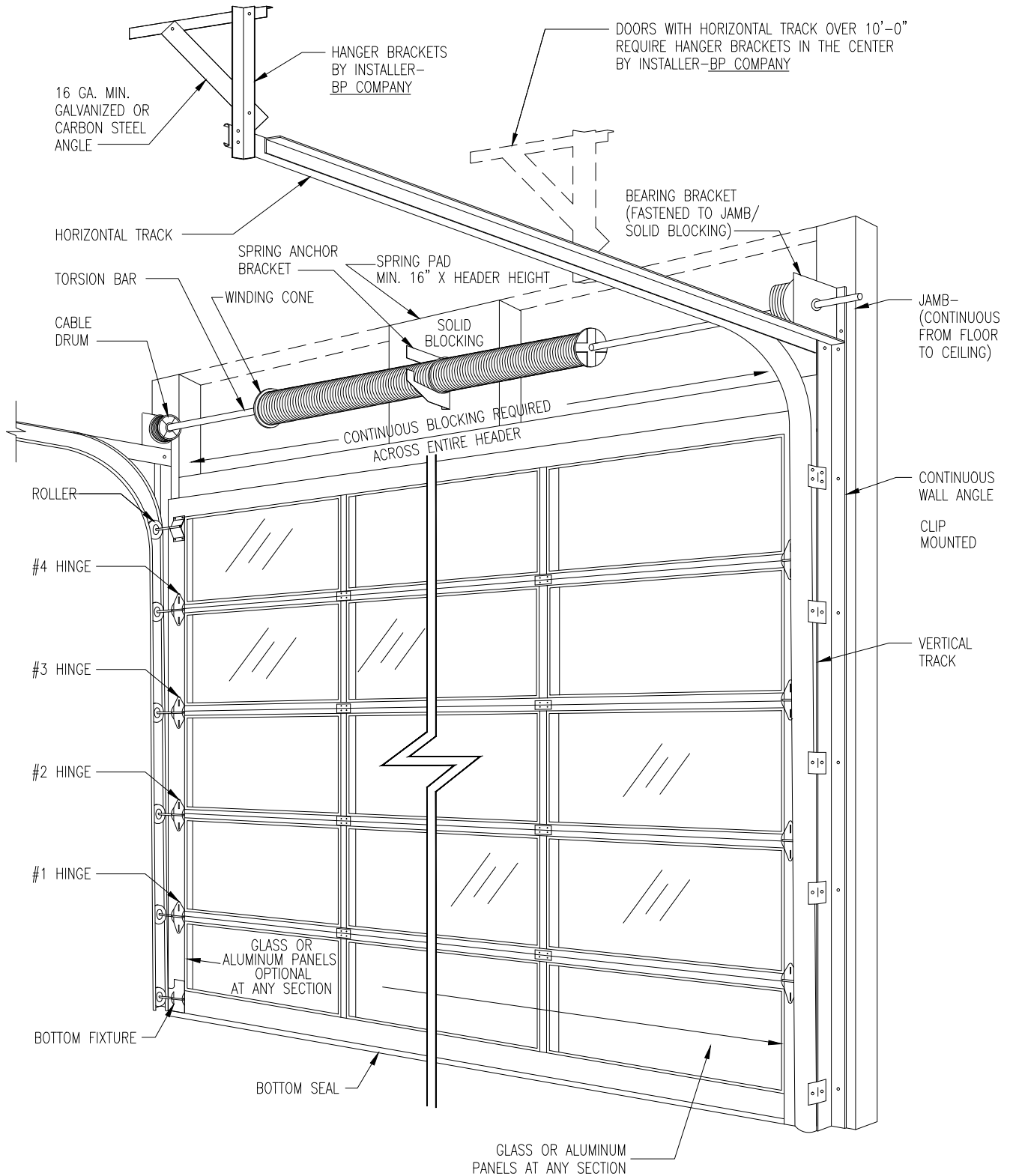
## The Architects' Choice:

- Insulated Frames & Glass (Pat.)
- Energy Code & Hurricane Rated
- Factory Direct Shipping (US & Intl.)
- Stainless Steel Hardware & Rollers
- Custom Designs, Finishes, Glazing
- Custom Tapered/Sloped Sections

TOLL FREE:

**877-442-1716**





## INTERIOR ELEVATION

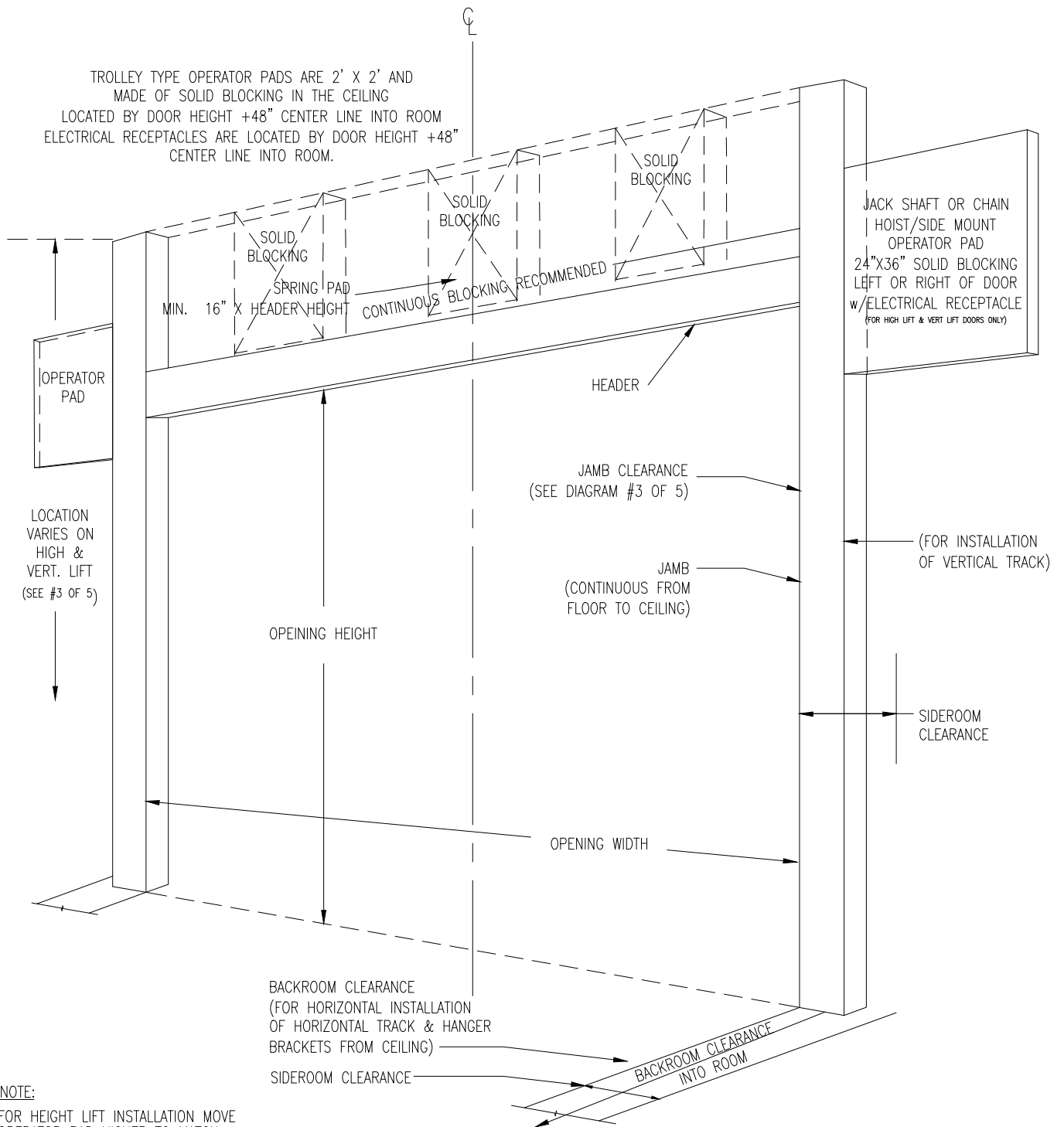


Glass Garage Doors

(877) 442-1716

[www.GlassGarageDoors.com](http://www.GlassGarageDoors.com)

DRAWING  
1 Of 5



## PREPARATION OF THE OPENING



Glass Garage Doors

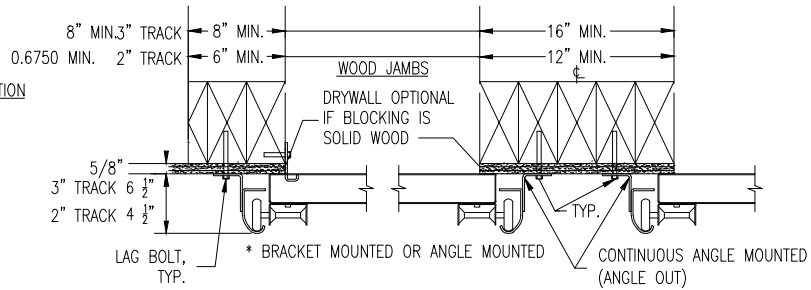
(877) 442-1716

[www.GlassGarageDoors.com](http://www.GlassGarageDoors.com)

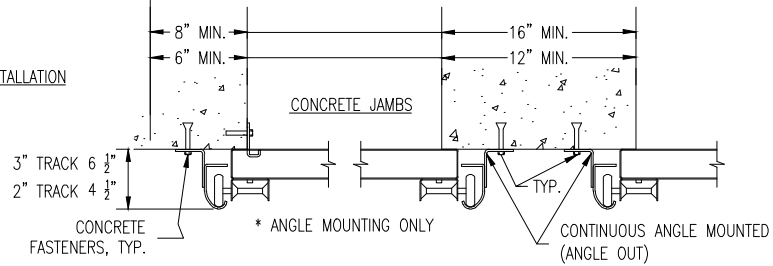
DRAWING  
2 Of 5

# PREPERATION OF 2" & 3" TRACK REQUIREMENTS AND SIDE JAMB CLEARANCES – PLAN VIEW

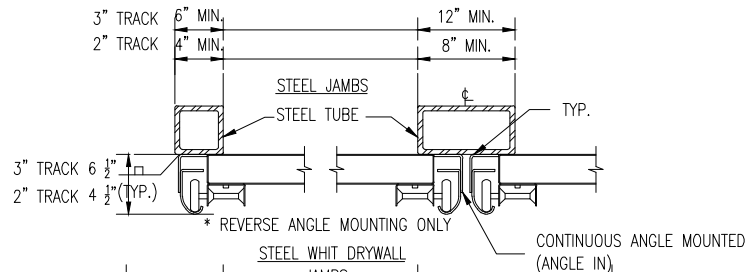
## LAG BOLT INSTALLATION



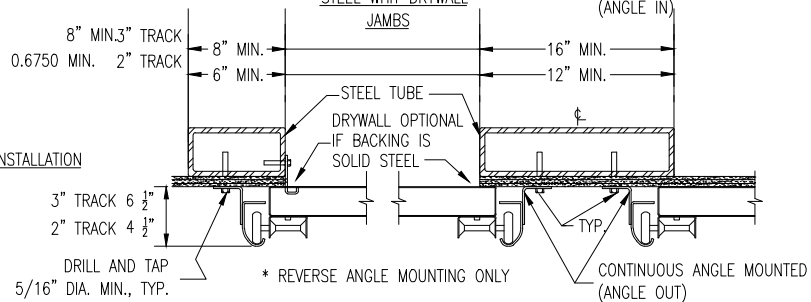
## CONCRETE FASTENER INSTALLATION



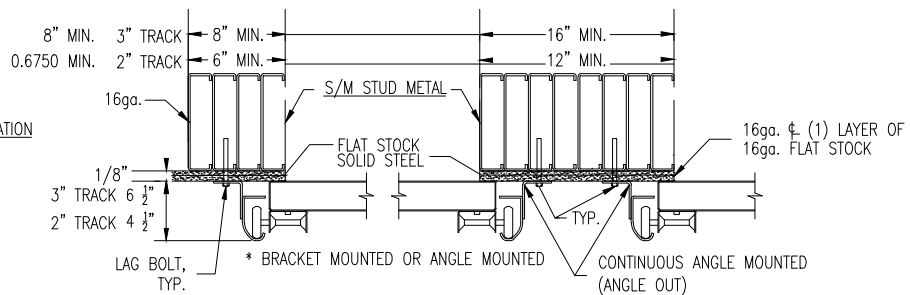
## WELDED INSTALLATION



## THREADED SCREW INSTALLATION



## S/M STUD INSTALLATION



## SIDE TRACK CLEARANCES



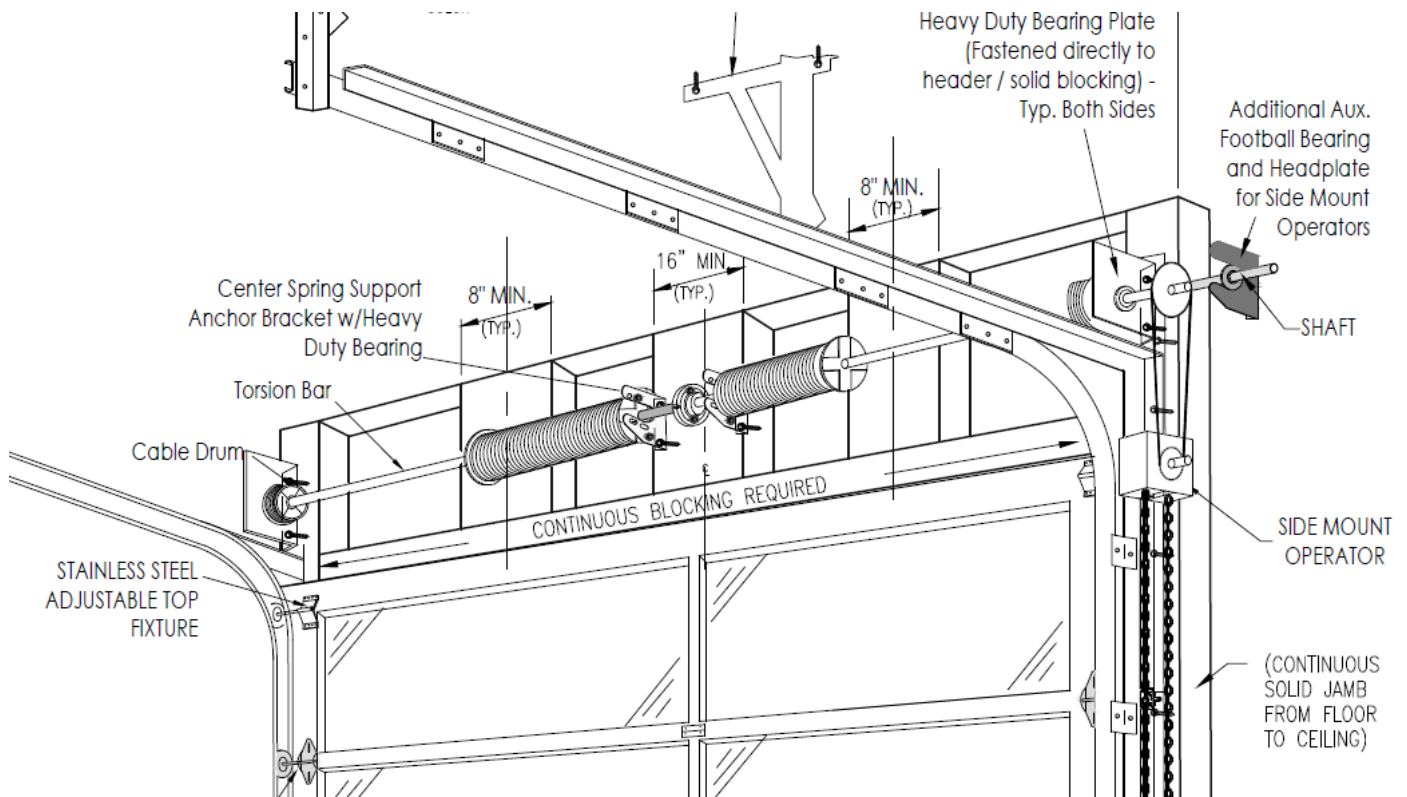
Glass Garage Doors

(877) 442-1716

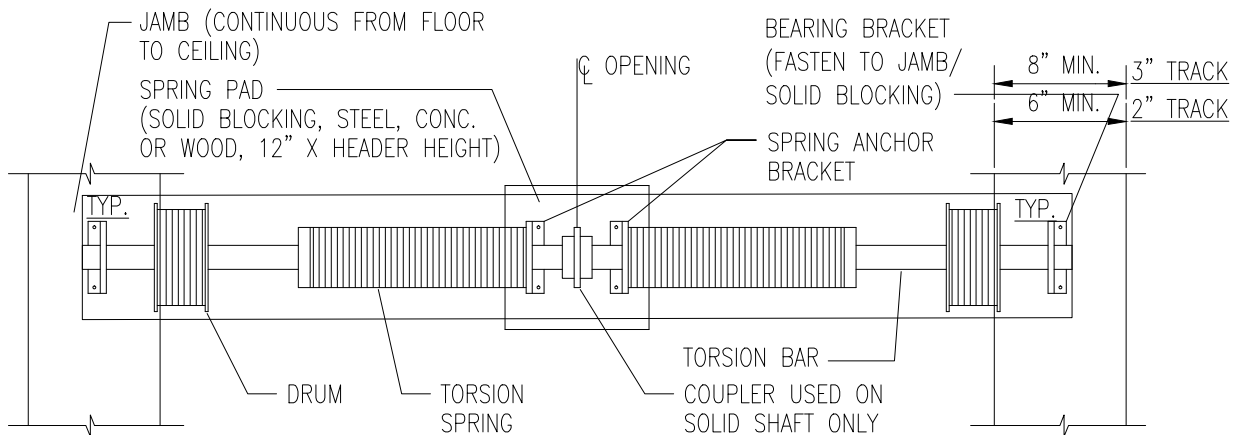
[www.GlassGarageDoors.com](http://www.GlassGarageDoors.com)

DRAWING  
3 Of 5

## 2 SPRINGS - ISOMETRIC VIEW



## 2 SPRINGS - FRONT ELEVATION



CONTINUOUS BLOCKING IS REQUIRED

NOTE: JAMBS ARE CONTINUOUS FROM FLOOR TO CEILING (SEE DIAGRAM #2 OF 5)

### NOTE:

- \* 2" AND 3" TRACK: 1" CLEARANCE BETWEEN OUTSIDE OF DRUM AND HORIZONTAL TRACK.
- \* EXCEPT ON ROOF PITCH TRACK WHICH REQUIRES ADDITIONAL ROOM. 1" ADDITIONAL PER EVERY INCH OF PITCH.

## SPRING ANCHOR PAD



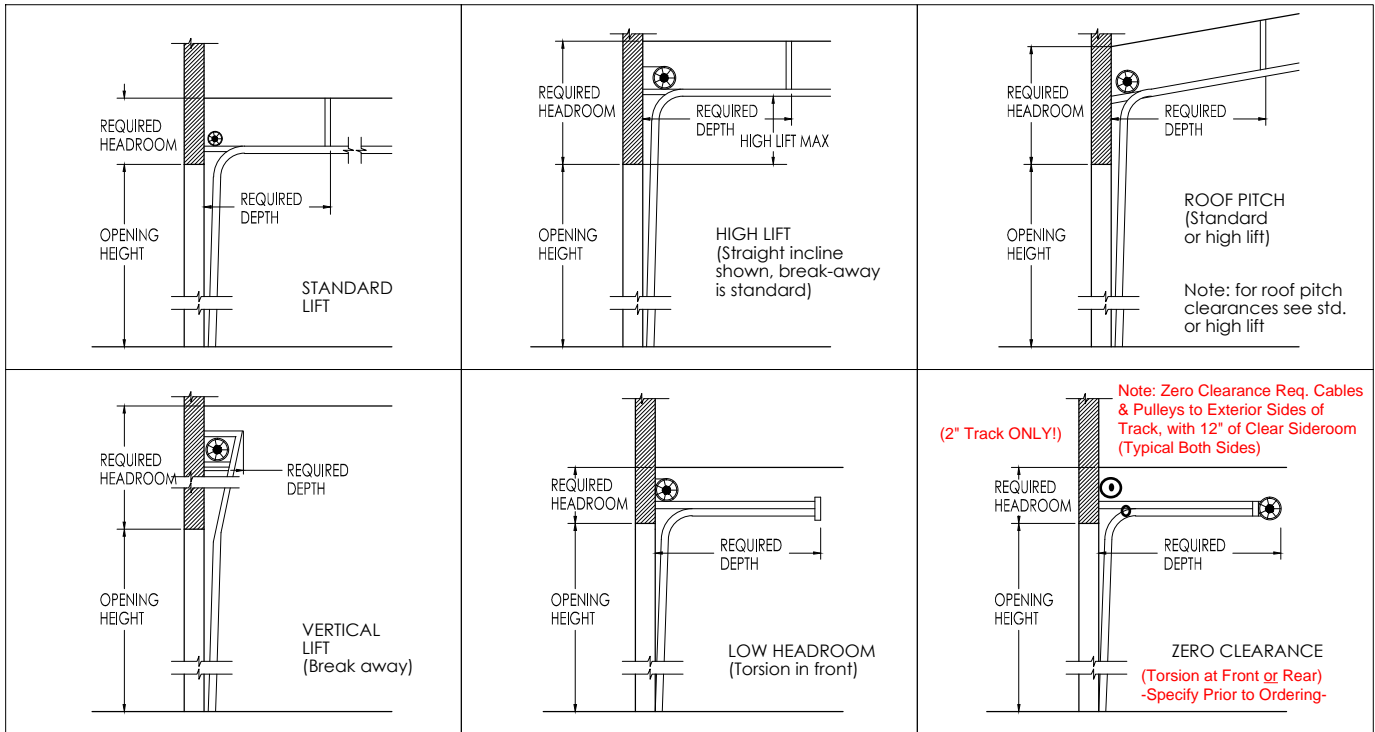
Glass Garage Doors

(877) 442-1716

[www.GlassGarageDoors.com](http://www.GlassGarageDoors.com)

DRAWING  
4 Of 5

## TRACK SELECTION GUIDE & CLEARANCES



**- MINIMUM REQ. -**

### OPERATING CLEARANCES

	HEADROOM REQ.		SIDE ROOM (Typ. Both Sides)		DEPTH INTO ROOM (PERPENDICULAR TO DOOR)
	2" Track	3" Track	2" Track	3" Track	
Std. Lift Manual or Side Mnt.	16"	22"	6"	8"	Opening Height + 18" Manual or Side Mnt. Oper.
Std. Lift Trolley Operator	20"	26"	6"	8"	Opening Height + 48" For Trolley Operator
High lift Manual ***	24" High Lift + 12" min.		6"	8"	Opening Height - Lift + 48"
High Lift Motor Oper. **	24" High Lift + 12" min.		30"x48" One Side of Header		Opening Height - High Lift Amount
Vertical Lift Manual ***	Double Door Ht. + 18"		6"	8"	18"
Vertical Lift Motor Oper. **	Double Door Ht. + 18"		30"x48" One Side of Header		18"
Low Headroom Manual	N/A	N/A	N/A	N/A	N/A
Low Headroom Motor Oper. *	11"	17"	6"	8"	Opening Height + 48" Trolley Operator Req.
Zero Clearance Manual	N/A	N/A	N/A	N/A	N/A
Zero Clearance Motor Oper.	6"	N/A	12" x 600lb max	N/A	Opening Height + 48" Trolley Operator Req.

### OPERATING WEIGHTS

Multiply Door Width x Door Height x 5lbs = Door Weight (Select proper track above)

NOTE : Door weights are: 5 lbs. Per SQ. FT.

TRACK LIMITS:

2" Track = 600lbs Max.

3" Track = 1600lbs Max.

\* Standard Lift, Low Headroom, and Zero Clearance Track are for trolley type operators.  
 \*\* High Lift and Vertical Lift clearances are for jock shaft or chain hoist/side mounted type operators. See diagram #2 of 5  
 \*\*\* 4" of additional side room is required (one side) for doors having chain hoists. (Chain hoists are for vertical & high lifts only)  
 NOTE 1: See diagram #2 of 5 for side mount jack shaft operator preparation. The location of the standard pad is determined by the door height (+) the amount of high lift or vertical lift (-) 18' below headroom requirements (center line of operator pad)

## TRACK SELECTION GUIDE & CLEARANCES



Glass Garage Doors

(877) 442-1716

[www.GlassGarageDoors.com](http://www.GlassGarageDoors.com)

DRAWING  
5 Of 5





# Glass Garage Doors & Entry Systems, Inc.

## ARCHITECTURAL DESCRIPTION

### bp – Full View Aluminum & Glass Sectional Garage Doors

Factory Direct Installations in CA, AZ, NV, FL, optional in all other states (Shipped World Wide)

- MODEL'S: **bp - 350** (4 ft.-8ft. wide x 8 ft. high) **Lite Duty**  
**bp - 450 HD** (8 ft.-16 ft. wide x 12 ft. high) **Heavy Duty**  
**bp - 550 SHD** (16 ft.-24 ft. wide x 16 ft. high) **Super Heavy Duty**  
**California Line:** Typ. use: Garages & Warehouses spaces (Non Conditioned)  
**Insulated Line:** Typ. use: Sealing the Building Envelope (Air Tight for HVAC)  
**Hurricane Line:** Typ. use: High Wind & Miami / Dade NOA (Hurricane Zones)
- MANUFACTURER: Aluminum & Glass Sectional Overhead Garage Doors: Full Vision Type; manufactured by  
**bp - Glass Garage Doors** in Pomona, CA - 877- 442-1716 – [www.glassgaragedoors.com](http://www.glassgaragedoors.com)  
An established manufacturer with 65 years experience specializing in Glass Garage Doors
- ALUM. FRAMES: All sections are constructed of **bp** - extruded aluminum alloy. The tensile strength is a minimum of 38 ksi, and approximately double the strength of standard 6063-T5 aluminum alloy.  
All rails are heat treated to maximum hardness as per Aluminum Association Standards.
- STILES & RAILS: **Model bp - 350:** Top rails, bottom rails, and end stiles are 3-1/4" wide.  
**Model bp - 450 HD:** Top & Bottom rails are 5-3/8" wide and end stiles are 3-1/4" wide  
**Model bp - 550 SHD:** Top & Bottom rails are 5-3/8" wide and end stiles are 3-1/4" wide  
Horizontal meeting rails have a combined width of 2-3/4".  
Vertical intermediate center mullions are 1-1/2" wide.  
5/16 inch thru-bolts, nuts, and washers are used to rigidly secure all stiles and rails.
- FINISH: All rails are standard clear anodized at least 4 mills thick for a permanent luster finish.  
Powder coated colors can be chosen from the RAL European color standard. (Optional)  
(Kynar paints or coatings are optional. Control Samples or Color #'s must be provided to **bp**)
- DOOR THICKNESS: 1-3/4 inches thick.
- JOINTS: All joints are mitered to form a tight and smooth fit with the door rails.
- COUNTER BALANCE: Galvanized torsion springs, head-plates, and center spring supports are mounted on a continuous galvanized torsion bar, calculated to exact weight and travel of each door.  
Cable drums are of die cast aluminum and are paired categorically for the track type specified.  
Lift cables are of high tension galvanized aviation type. (1/8 " – 1/4" as req. by Factory Calc.'s)  
Stainless Steel: Springs, and hardware above, can be substituted in lieu of galvanized (Optional)
- TRACK: 2 inch x 15ga. galvanized continuous angle mounted (14 inch or 20 in. radius x 600lb max.)  
3 inch x 12ga. galvanized continuous angle mounted (15 inch radius x 1200lb max.)  
3 inch x 12ga. Stainless Steel continuous angle mounted (15 inch radius x 1400lb max) (Optional)  
All tracks are tapered to insure a weather-tight fit when in the closed position.  
(See "Track Selection Guide" for headroom required in our design guide: [glassgaragedoors.com](http://glassgaragedoors.com))



# Glass Garage Doors & Entry Systems, Inc.

- HINGES:** **bp** - Stainless Steel 12ga. laser cut and offset type, are graduated at each section to insure weather tight fit. **bp** – Stainless Steel hinges do not require lubrication. (Lifetime Warranty = Standard)
- ROLLERS:** 2 in. **bp** - Stainless Steel, poly coated tire, sealed, 500 lb ea., precision bearing, roller (Standard)  
3 in. **bp** - Stainless Steel, poly coated tire, sealed, 700 lb, precision bearing, roller (Standard)  
**bp** – Stainless Steel sealed rollers do not require lubrication. (Standard)
- WEATHER-STRIP:** A Vinyl or Santoprene gasket is applied at the factory the full length of the bottom section and at each end of the top rail where contact is made with the bumper spring.  
**bp** - Architectural perimeter weather-stripping is made of a three part extruded aluminum and Santoprene system, which conceals the fasteners with a snap cover. The **bp** – Architectural perimeter weather stripping can be exterior or interior mounted for a clean “Architectural finish”.  
**Optional:** To prevent energy loss, we recommend our Pat. Pend. “**bp** - Insulated Frame Package”
- OPERATORS:** Manual chain-hoists are compatible with standard, roof pitch, high-lift, and full vertical lift tracks  
Electric operation must be specified with the following: Push button station, key button station, and/or remote control operation. Auto reversing safety sensors are required for residential use and optional for most commercial applications. Operator specifications are per **bp** – Glass Garage Door factory recommendations; based on weight, height, track type, and as required per code.  
(Note: Low headroom & zero-clearance track must be electronically operated for safety)
- GLAZING:** Glass, aluminum, or specialty panels ranging from: 1/16 in. – 1/2 in. thickness, and are encased in vinyl moldings, held in place by aluminum snap-in beads, and are designed to be easily removed and replaced in case of glass or panel breakage. Tempered, Laminated, and Insulated Options.  
(Note: Call the Factory for Custom, or maximum panel limits!)
- GLASS/ SPECIFICATIONS:** Glass type must be specified with the following: Transparent or obscured frosted, tempered or laminated safety glass, and clear or color tinted hues (Visit us online to view glass panel samples)  
**Tempered Glass** meets the quality and strength requirements of ASTM C 1036 and ASTM 1048 for condition A, Quality q3, and Kind FT (Full Tempered). Tempered glass also meets the safety criteria of CPSC 16 CFR 1201 Categories 1 & 2, ANSI Z97.1, and qualifies as the glazing material for use in hazardous locations.  
**Laminated Safety Glass** (0.030 PVB or thicker interlayer with two lites of glass) also meets the safety criteria CPSC 16 CFR 1201 Categories 1 & 2, ANSI Z97.1, and ASTM C 1172 Standard Specifications for Laminated Architectural Flat Glass. 1/4" laminated glass has an STC of 35.
- ADDL. OPTIONS:** Custom glass panels, plastic panels, metal panels, or any flat panel within 1/16”- 1/2” thick  
Ventilation louvers in 1/16” aluminum panels as required by some local building codes  
300 powder coated colors from the RAL color standard, Simulated Wood, and Kynar Paint.  
Stainless track, springs, and related hardware. **Note:** Stainless hinges are already provided!  
Tapered bottom sections (for use when floors are out of square or sloping)  
Custom panel locations, widths, and heights within the same door can also be accommodated to meet specific Architectural designs. Custom Requests are also accepted: Call 877-442-1716

**Note: Custom configurations (Varied panels or centerlines, tapered bottom sections, etc.) require elevation/ shop drawings!**

**VIEW ADDITIONAL OPTIONS & INFO. ON OUR DOWNLOADS PAGE:** [www.GlassGarageDoors.com](http://www.GlassGarageDoors.com)



## **Insulated Line (US & Intl. Pat. System)**

**bp** - Glass Garage Doors "**Fully Insulated Frame Technology**" (US & Intl. **Patented**) is the key factor for eliminating air leakage, when using this type of door to seal the building envelope, or enclose any "climate controlled space". What is the point in having insulated glass panels, if the frame leaks Air or Water? Our Insulated Frame System also enhances acoustical performance: STC = 36±

**bp - Insulated Line** glazing options consists of: **bp** insulated frames with 1/2" Air filled IG units. Each glass panel is sealed during fabrication and are available in: transparent, obscured, with or without low-E glass, and in a variety of colors to suit your design. Every glass type has a unique set of energy ratings: U-Values of ± .52-.99, SHGC of ±.15-.45, and VT 0.02-.46; which is determined by the glass specified on the project; to match adjacent materials.

→ (Keep in mind that IG units (Insulated Glass) are ineffective if the frame leaks air!)

The NFRC Certified Air Resistance Package provides an airtight system for any wall opening (24ft wide max); where building code compliance is required. **bp** doors have been tested and certified as a whole, with "**Insulated Frames**". Testing reports and CPD #'s (Certified Products Database) for various glass types can be found at: [www.NFRC.org](http://www.NFRC.org)

### **Air Leakage Resistance Package\***

#### **Air Leakage Resistance Results (Per NFRC 400 / ASTM E283 / DASMA 105)**

<b>Residential Standard</b>	0.3 CFM
-----------------------------	---------

<b>Commercial Standard</b>	0.4 CFM
----------------------------	---------

<b>bp - Glass Garage Doors results</b>	<b>0.06 CFM</b>
--	-----------------

**\*Note:** The lower the CFM = Better Air Leakage Resistance. Thermal ratings for U- factor, SHGC, and VT available upon request, per NFRC 100 / 200.

- Air Infiltration package is available in combination with any type of glazing.



1511 W. 2<sup>nd</sup> St. - Pomona, CA 91766 – Toll Free: (877) 442-1716 – Fax: (626) 579-5320 – Web: [GlassGarageDoors.com](http://GlassGarageDoors.com)



Note: --> The "bp - Water Resistant Option" Per ASTM E331 & E547 [SOLD SEPARATELY], must be combined with the "bp - Air Infiltration Option" to function as tested; and **CAN NOT BE INSTALLED AFTERWARDS!**

Note: Doors or Windows without **Certified "NFRC" labels** = **FALSE ADVERTISING**, are **ILLEGAL PER ENERGY CODE**, and will Leak Air through the Frame System! Insulated Glass Alone **WILL NOT** make a Door or Window Insulated, **Unless a bp - Insulated Frame System** is also integrated! (US & Intl. Pat)



**24ft width max. x 16ft height max.**



**bp** Glass Garage Doors & Entry Systems, Inc.



## Hurricane Line (US Patented System)

**bp** – Glass Garage Doors meet hurricane requirements for wind load, impact, and cycling in accordance with Miami-Dade County Test Protocols TAS 201 (large missile impact), TAS 202 (structural pressure, air, forced entry), and TAS 203 (cyclic pressure) **bp** – Glass Garage Doors have been successfully tested, have passed, and been issued the **Miami-Dade County, Florida, Notice Of Acceptance (NOA) 17-1207.01 Exp. Jan. 2021** and **17-1207.02 Exp. Jan. 2021** **bp** – Glass Garage Doors are engineered to be impact resistant and provide high structural performance.

An optional, NFRC Certified Air Leakage Resistance Package is available, for an airtight wall opening where building code compliance for energy efficiency, is required. Per NFRC 400, **bp - Glass Garage Doors Fully Insulated Frame Technology (US and International Patented)** and interior/exterior mounted perimeter weather-strip, combine to significantly reduce air leakage well below the allowable residential and commercial standards.

### Design Pressure and Impact Rating

<b>NOA</b>	<b>+50.0</b>	<b>NOA</b>	<b>+65.0</b>	Small and Large Missile Impact Rated
<b>17-1207</b>	<b>/ -50.0</b>	<b>17-1207</b>	<b>/ -65.0</b>	
<b>.01</b>	<b>PSF</b>	<b>.01</b>	<b>PSF</b>	

**MIAMI-DADE COUNTY**  
**APPROVED**

### Air Leakage Resistance Results (Per NFRC 400 / ASTM E283)

**Residential Standard** 0.3 CFM

**Commercial Standard** 0.4 CFM

**bp – Glass Garage Door Results** **0.06 CFM**

**Note:** The lower the CFM = Better Air Leakage Resistance. Thermal ratings for U-factor, SHGC, and VT available upon request, per **NFRC 100**



**24ft width max. x 16ft height max.**





## California Line

**bp** manufactures and installs full-vision aluminum and glass sectional overhead doors. The California line (our base model) is primarily used for typical garage and warehouse areas in all climates.

**bp** - Glass Garage Doors offers an optional NFRC Certified Air Leakage Resistance Package for an airtight wall opening, where building code compliance for energy efficiency is required.

**bp** - *Fully Insulated Frame Technology (US and International Patented)* is the key factor for eliminating air leakage, when using this type of door to enclose any climate controlled space. Acoustical performance is also enhanced: STC = 36+

**24ft width max. x 16ft height max.**

### Air Leakage Resistance Package\*

#### Air Leakage Resistance Results (Per NFRC 400 / ASTM E283)

Residential Standard	0.3 CFM
Commercial Standard	0.4 CFM
<b>bp - Glass Garage Doors results</b>	<b>0.06 CFM</b>

**\*Note:** The lower the CFM = Better Air Leakage Resistance. Thermal ratings for U-factor, SHGC, and VT available upon request, per NFRC 100.

\*Air Infiltration package is available in combination with any type of glazing.



# bp Glass Garage Doors & Entry Systems, Inc.

## bp - Water Resistant Package



Note: The Water Resistant Package **must be combined** with the Air Resistant Package **DURING THE MANUFACTURING PROCESS** to function as tested! The Water Resistant Package **CAN NOT BE INSTALLED AFTERWARDS**, per the ASTM E331 or ASTM E547 testing standard.

The Water Resistant Package has been tested in accordance with the following test methods:

- ❖ ASTM E331- Standard Test Method for Water Penetration of Exterior Windows, Skylights, Doors, and Curtain Walls by Uniform Static Air Pressure Difference; 2009.
- ❖ ASTM E547- Standard Test Method for Water Penetration of Exterior Windows, Skylights, Doors, and Curtain Walls by Cyclic Static Air Pressure Difference; 2009.

Test Method E331 and E547			Title of Test Water Resistance			Results No Leakage	
Classification			DP	Pa	PSF	mph	" H <sub>2</sub> O
Res.	Lite Com.	Com.	30	220	4.59	42	0.88"

**24ft width max. x 16ft height max.**



bp - Glass Garage Doors

-

Standard RAL Color Chart

								
RAL 1000 49/15200	RAL 1001 49/15190 38/15001	RAL 1002 49/22590 38/20002	RAL 1003 49/22580	RAL 1004 49/22570	RAL 1005 49/22560	RAL 1006 49/22550	RAL 1007 49/22540	RAL 1011 49/15180
								
RAL 1012 49/22530	RAL 1013 49/11280 38/10013	RAL 1014 49/15170 38/15014	RAL 1015 49/15320 38/15015	RAL 1016 49/22520 38/20016	RAL 1017 49/22510	RAL 1018 49/21830	RAL 1019 49/13660 38/15019	RAL 1020 49/22500 38/20020
								
RAL 1021 49/22280	RAL 1023 49/22490	RAL 1024 49/22480 38/20024	RAL 1027 49/22470	RAL 1028 49/22460	RAL 1032 49/22450	RAL 1033 49/22240	RAL 1034 49/23910	RAL 1037 49/20096
								
RAL 2000 49/24570	RAL 2001 49/24560	RAL 2002 49/24550	RAL 2003 49/24540	RAL 2004 49/24530	RAL 2008 49/24340	RAL 2009 49/24360	RAL 2010 49/24520	RAL 2011 49/24580
								
RAL 2012 49/24690	RAL 3000 49/33120	RAL 3001 49/31120	RAL 3002 49/31110	RAL 3003 49/31100	RAL 3004 49/33900	RAL 3005 49/31900	RAL 3007 49/31910	RAL 3009 49/31920
								
RAL 3011 49/31090	RAL 3012 49/31940 38/30012	RAL 3013 49/31950	RAL 3014 49/31080	RAL 3015 49/33670	RAL 3016 49/31980	RAL 3017 49/31060	RAL 3018 49/31050	RAL 3020 49/31040
								
RAL 3022 49/33700	RAL 3027 49/33660	RAL 3031 49/34730	RAL 4001 49/43160	RAL 4002 49/31030	RAL 4003 49/32270	RAL 4004 49/31020	RAL 4005 49/42780	RAL 4006 49/32090
								
RAL 4007 49/32540	RAL 4008 49/32280	RAL 4009 49/34740	RAL 4010 49/40490	RAL 5000 49/42200	RAL 5001 49/42210	RAL 5002 49/42220	RAL 5003 49/42230	RAL 5004 49/42240 38/40004
								
RAL 5005 49/43190	RAL 5007 49/42250 38/40007	RAL 5008 49/42260 38/40008	RAL 5009 49/42270	RAL 5010 49/42280	RAL 5011 49/43180 38/40011	RAL 5012 49/43170	RAL 5013 49/42310 38/40013	RAL 5014 49/42320
								
RAL 5015 49/42330	RAL 5017 49/40760 38/40017	RAL 5018 49/41140 38/40020	RAL 5019 49/42360 38/40019	RAL 5020 49/44270 38/40018	RAL 5021 49/41190 38/40021	RAL 5022 49/42390	RAL 5023 49/44650	RAL 5024 49/44660

								
RAL 6000 49/53160 38/50000	RAL 6001 49/52900 38/50005	RAL 6002 49/52890	RAL 6003 49/52880 38/50003	RAL 6004 49/50980 38/50004	RAL 6005 49/50670 38/50002	RAL 6006 49/52870 38/50006	RAL 6007 49/52860 38/50007	RAL 6008 49/53240 38/50008
								
RAL 6009 49/52840 38/50009	RAL 6010 49/52830 38/50031	RAL 6011 49/52820 38/50011	RAL 6012 49/51540 38/50012	RAL 6013 49/52810 38/50013	RAL 6014 49/52800	RAL 6015 49/52790	RAL 6016 49/51020 38/50016	RAL 6017 49/52780 38/50017
								
RAL 6018 49/52720 38/50018	RAL 6019 49/51000 38/50019	RAL 6020 49/52710 38/50020	RAL 6021 49/52700 38/50021	RAL 6022 49/52690 38/50022	RAL 6024 49/52680	RAL 6025 49/52670	RAL 6026 49/52660 38/50026	RAL 6027 49/50990 38/50027
								
RAL 6028 49/52650 38/50028	RAL 6029 49/52640 38/50029	RAL 6032 49/52630 38/50032	RAL 6033 49/55010 38/50033	RAL 6034 49/55020 38/50034	RAL 7000 49/72700 38/70000	RAL 7001 49/72710	RAL 7002 49/72720 38/70007	RAL 7003 49/72600
								
RAL 7004 49/73300 38/70004	RAL 7005 49/72590 38/70005	RAL 7006 49/72580 38/70006	RAL 7008 49/72570	RAL 7009 49/72770 38/70009	RAL 7010 49/72560 38/70014	RAL 7011 49/72790 38/70011	RAL 7012 49/71180 38/70012	RAL 7013 49/72550 38/70013
								
RAL 7015 49/72820 38/70015	RAL 7016 49/72830 38/70016	RAL 7021 49/72540 38/70021	RAL 7022 49/72850 38/70022	RAL 7023 49/72530 38/70023	RAL 7024 49/72870 38/70024	RAL 7026 49/72880 38/70026	RAL 7030 49/72890 38/70027	RAL 7031 49/72520 38/70031
								
RAL 7032 49/72910 38/70001	RAL 7033 49/72510 38/70033	RAL 7034 49/72500	RAL 7035 49/73510 38/70035	RAL 7036 49/72950 38/70036	RAL 7037 49/72480 38/70037	RAL 7038 49/72470 38/70038	RAL 7039 49/71020 38/70039	RAL 7040 49/75470 38/70046
								
RAL 7042 49/73250 38/70042	RAL 7043 49/72460 38/70043	RAL 7044 49/75480 38/70044	RAL 7045 49/77890 38/70045	RAL 7046 49/72010 38/70002	RAL 7047 49/72020 38/70047	RAL 8000 49/66170	RAL 8001 49/66160 38/60005	RAL 8002 49/66150 38/60002
								
RAL 8003 49/66140 38/60003	RAL 8004 49/66130 38/60004	RAL 8007 49/66120 38/60007	RAL 8008 49/66110 38/60008	RAL 8011 49/66100 38/60011	RAL 8012 49/66090 38/60012	RAL 8014 49/65230 38/60010	RAL 8015 49/63040	RAL 8016 49/66080 38/60016
								
RAL 8017 49/65220 38/60017	RAL 8019 49/65490 38/60019	RAL 8022 49/63080 38/60022	RAL 8023 49/66070 38/60023	RAL 8024 49/66060 38/60024	RAL 8025 49/66050 38/60025	RAL 8028 49/66500 38/60028	RAL 9001 49/10016 38/10001	RAL 9002 49/70520 38/10002
								
RAL 9003 49/11400 38/10003	RAL 9004 49/81950 38/80004	RAL 9005 49/82830 38/80010	RAL 9010 49/11500 38/10004	RAL 9011 49/80540	RAL 9016 49/11340 38/10010	RAL 9017 49/80550 38/80017	RAL 9018 49/72490 38/10018	



Disclaimer

RAL color swatches featured in this color chart have been matched to color standards at a 60-degree visual angle under a D65 Daylight primary source. The swatches are to be considered as an indication only. In practice, discrepancy between the color swatch and the actual powder coating may arise. This is due to paper and ink limitations, the influence of light and heat during the color chart production, as well as gloss level, substrate, surface variations, binder systems and pigments, coating thickness and cure oven conditions used during application. For an accurate color and finish assessment, it is recommended to obtain a powder coated sample panel from TIGER Drylac®.

## Architectural Matte, Satin and Semi Gloss



TIGER Drylac® 38/100003  
**RAL 9003 White** 30±5\*



TIGER Drylac® 38/70070  
**Taupe** 30±5\*



TIGER Drylac® 38/60014  
**Medium Bronze** 30±5\*



TIGER Drylac® 38/30028  
**Brick Red** 20±5\*



TIGER Drylac® 38/70049  
**Silver Grey** 30±5\*



TIGER Drylac® 38/10070  
**Bone White** 30±5\*



TIGER Drylac® 38/15002  
**Sierra Tan** 30±5\*



TIGER Drylac® 38/60080  
**Statuary Bronze** 30±5\*



TIGER Drylac® 38/60006  
**Aged Copper** 20±5\*



TIGER Drylac® 38/40025  
**Interstate Blue** 20±5\*



TIGER Drylac® 38/70048  
**Sky Grey** 30±5\*



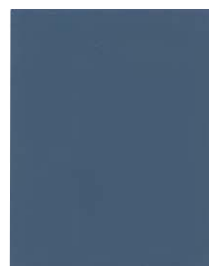
TIGER Drylac® 38/70025  
**Ash Grey** 30±5\*



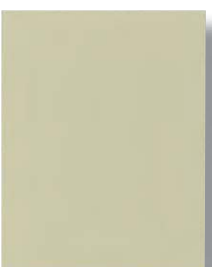
TIGER Drylac® 38/60090  
**Dark Anodized Bronze** 20±5\*



TIGER Drylac® 38/50080  
**Ivy Green** 30±5\*



TIGER Drylac® 38/40051  
**Military Blue** 30±5\*



TIGER Drylac® 38/15003  
**Almond** 30±5\*



TIGER Drylac® 38/70019  
**Slate Grey** 30±5\*



TIGER Drylac® 38/30033  
**Boysenberry** 20±5\*



TIGER Drylac® 38/50037  
**Classic Green** 30±5\*



TIGER Drylac® 38/80020  
**Jet Black** 30±5\*



TIGER Drylac® 38/15012  
**Sandstone** 30±5\*



TIGER Drylac® 38/60018  
**Koko Brown** 30±5\*



TIGER Drylac® 38/30041  
**Redwood** 30±5\*



TIGER Drylac® 38/50110  
**Hartford Green** 30±5\*



TIGER Drylac 38/81009  
**Railing Black Semi Gloss** 60±5\*

\*Gloss level according to Gardner 60° ASTM D523. Paper and ink limitations of color samples as well as influence from heat and light account for differences from actual powder coatings.



## Glossy

## Metallic



TIGER Drylac® 38/00001  
**Clear 90+\***



TIGER Drylac® 38/15009  
**Crème 305 85±5\***



TIGER Drylac® 38/50039  
**Highland 305 85±5\***



TIGER Drylac® 38/70061  
**Grey Classic 314 85±5\***



TIGER Drylac® 38/90003  
**Argento 301 Metallic**



TIGER Drylac® 38/10007  
**Bianco 302 85±5\***



TIGER Drylac® 38/15007  
**Crème 303 85±5\***



TIGER Drylac® 38/50040  
**Highland 306 85±5\***



TIGER Drylac® 38/80002  
**Carbon 301 85±5\***



TIGER Drylac® 38/90010  
**Marine Silver**



TIGER Drylac® 38/10090  
**Extrusion White 85±5\***



TIGER Drylac® 38/15005  
**Crème 301 85±5\***



TIGER Drylac® 38/50041  
**Highland 307 85±5\***



TIGER Drylac® 38/90007  
**Argento 305 Metallic**



TIGER Drylac® 38/70032  
**Grey Classic 303 85±5\***



TIGER Drylac® 38/60026  
**Marrone 306 85±5\***



TIGER Drylac® 38/40033  
**Azzurro 307 85±5\***



TIGER Drylac® 38/90011  
**Argento 308 Metallic**



TIGER Drylac® 38/70056  
**Grey Classic 310 85±5\***



TIGER Drylac® 38/60039  
**Marrone 308 85±5\***



TIGER Drylac® 38/70054  
**Grey Classic 308 85±5\***



TIGER Drylac® 38/90015  
**Pearl Dark Grey Metallic**

\*Gloss level according to Gardner 60° ASTM D523. Paper and ink limitations of color samples as well as influence from heat and light account for differences from actual powder coatings.

**bp - Glass Garage Doors & Entry Systems, Inc - Super Durable - Wood Powder Coating**



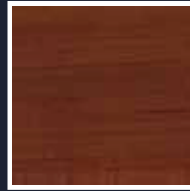
DS 403  
1001/01



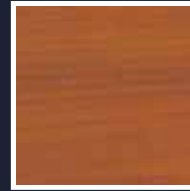
DS 403  
1002/01



DS 402  
1101/02



DS 403  
1102/01



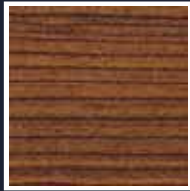
DS 402  
1103/01



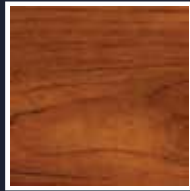
DS 403  
1301/01



DS 403  
1401/01



DS 403  
1402/02



DS 402  
1403/01



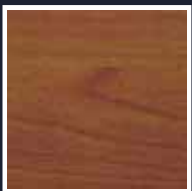
DS 402  
1404/02



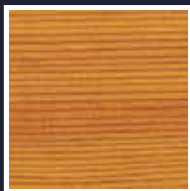
DS 402  
1405/02



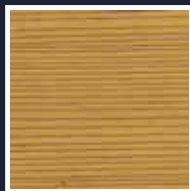
DS 402  
1406/01



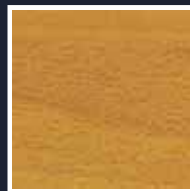
DS 403  
1407/01



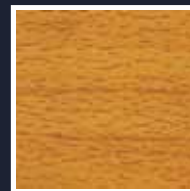
DS 402  
1501/02



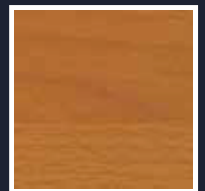
DS 402  
1502/02



DS 402  
1601/06



DS 402  
1602/01



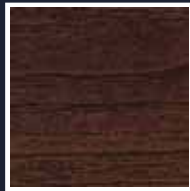
DS 402  
1603/02



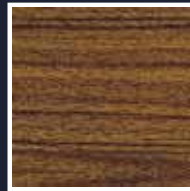
DS 406  
1701/01



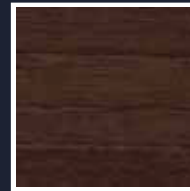
DS 403  
1801/02



DS 403  
1802/02



DS 403  
1803/01



DS 403  
1804/05



DS 403  
1806/02



DS 403  
1807/01



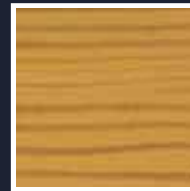
DS 402  
1901/01



DS 402  
2001/01



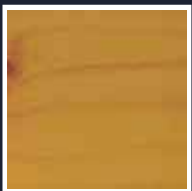
DS 402  
2101/01



DS 402  
2102/01



DS 402  
2103/01



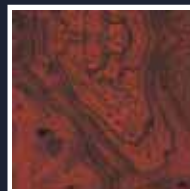
DS 402  
2104/01



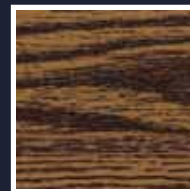
DS 403  
2301/02



DS 403  
2401/04



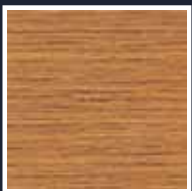
DS 810+PE411  
2402/02



DS 403  
2501/02



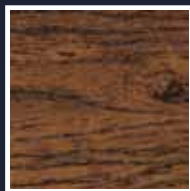
DS 402  
2501/05



DS 402  
2502/01



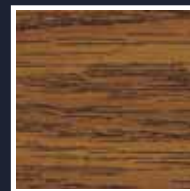
DS 403  
2503/04



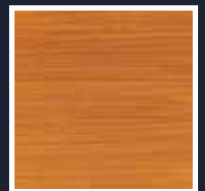
DS 403  
2504/01



DS 403  
2505/01

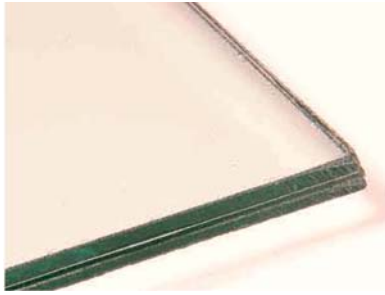


DS 403  
2507/01



DS 402  
2902/03

## bp - Glass Garage Doors "Glass Panel Options"



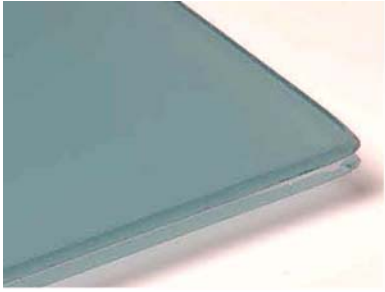
CLEAR LAMINATED



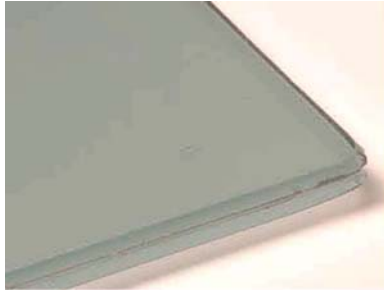
OBSUCRED LAMINATED  
REG. WHITE (SLIGHT GREENISH HUE)



OBSUCRED LAMINATED  
STARFIRE WHITE (LOW-IRON)



OBSUCRED LAMINATED  
AZURLITE (Orders of 10 or more doors)



OBSUCRED LAMINATED  
SOLEX GREEN



OBSUCRED LAMINATED  
GRAY 61%



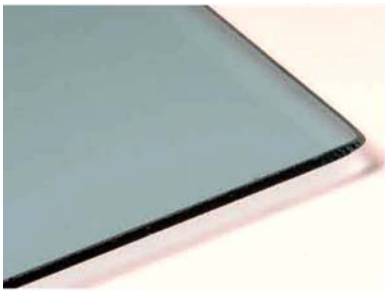
OBSUCRED LAMINATED  
GRAY 24%



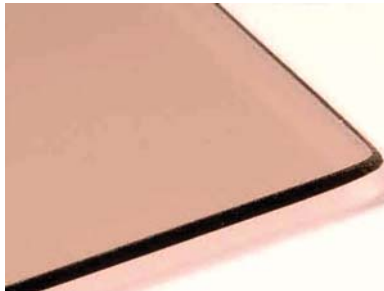
OBSUCRED LAMINATED  
EVERGREEN (Orders of 10 or more doors)



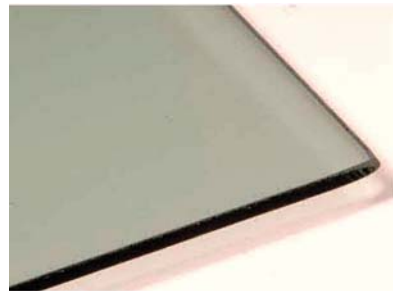
OBSUCRED LAMINATED  
BRONZE



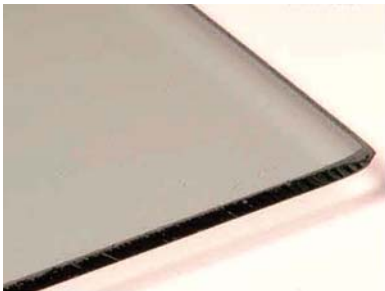
TEMPERED AZURLITE  
(Orders of 10 or more doors)



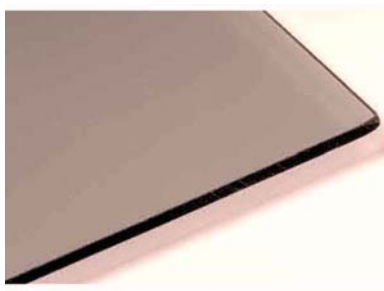
TEMPERED BRONZE



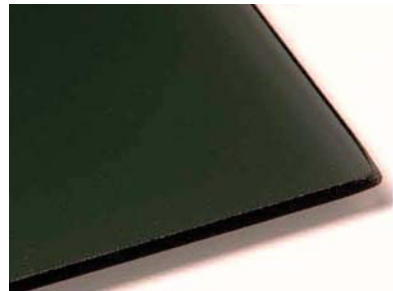
TEMPERED EVERGEEN  
(Orders of 10 or more doors)



TEMPERED SOLEX

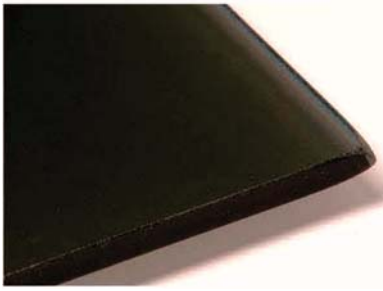


TEMPERED GRAY 61%



TEMPERED GRAY 24%

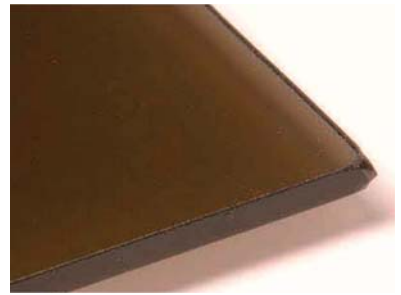
## bp - Glass Garage Doors "Glass Panel Options"



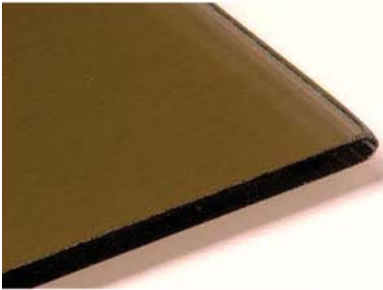
REFLECTIVE TEMPERED BLUE RC



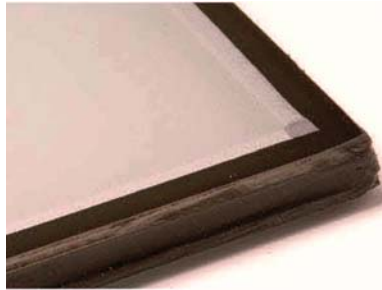
REFLECTIVE TEMPERED BRONZE RC



REFLECTIVE TEMPERED GRAY RC



REFLECTIVE TEMPERED GREEN RC



OBSURED INSULATED  
STARPHIRE SANDBLASTED (WHITE)



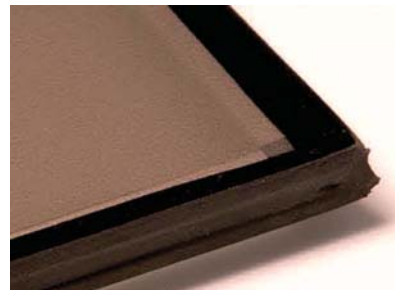
OBSURED INSULATED  
ACID ETCHED (SLIGHT GREENISH HUE)



OBSURED INSULATED  
ACID ETCHED AZURLITE  
(Orders of 10 or more doors)



OBSURED INSULATED  
ACID ETCHED EVERGREEN  
(Orders of 10 or more doors)



OBSURED INSULATED  
ACID ETCHED BRONZE



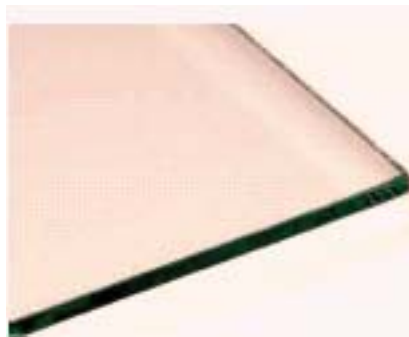
OBSURED INSULATED  
ACID ETCHED GRAY 61%



OBSURED INSULATED  
ACID ETCHED GRAY 24%



OBSURED INSULATED  
ACID ETCHED SOLEX



TEMPERED CLEAR



## bp - Glass Garage Doors "Glass Panel Options"



TEMPERED DOUBLE GLUECHIP



TEMPERED RAIN GLASS

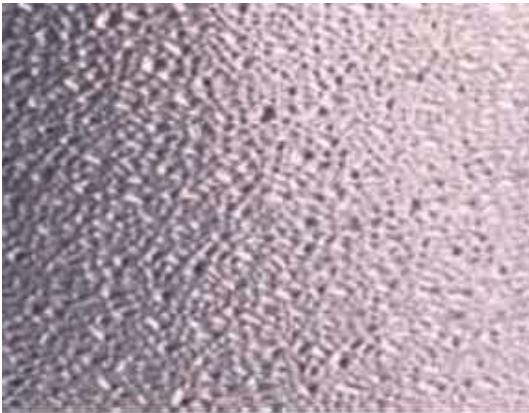
(Pattern can be rotated horizontally. Specify at ordering)



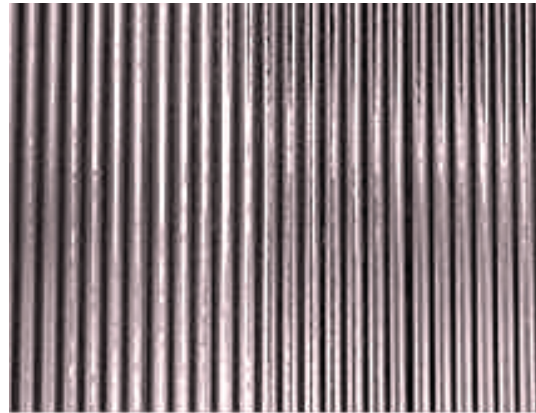
TEMPERED GLUECHIP



TEMPERED SPRAYLITE AQUA



TEMPERED CRYSTAL ICE



TEMPERED REEDED

(Pattern can be rotated horizontally. Specify at ordering)

# bp Glass Garage Doors

## "The Architect's Choice"

### bp Advantages (Our Door)



Competitors' Top Glass, Mid Glass, and Bottom Glass Panels Are Not Equal In Size! Does Not Appear Symmetrical!

### Competitors' Disadvantage (Competitor Door)



- BP- Aluminum Alloy:** High tensile strength at 38 ksi and double the rigidity of standard alloy.
- Standard (6063) Aluminum Alloy:** Much weaker and 1/2 the tensile strength of BP - Aluminum Alloy.
- Narrow Intermediate Mullions:** Cleaner architectural lines, showing more glass and less structure.
- Wide Intermediate Mullions:** Shows less glass, more frame, and is visually less appealing (See above, marked by arrows).
- Heavier Wall Thickness:** Allows for more weight and wider glass panels, without deflection. (Ex. Our door has 250 lbs of aluminum vs. a competitor's 100 lbs.)
- Thinner Wall Thickness:** Causes vertical and horizontal deflection, which requires stiffening struts that can be seen through the glass. (See above, as marked by red arrows)
- Factory Direct Manufacturing Speed:** By strictly focusing on Glass Garage Doors and Entry Doors, our manufacturing time is the best in the industry.
- Not Factory Direct:** Orders are placed through a distributor, and can take 6-10 weeks.
- Factory Direct Installation (CA, AZ, NV, FL & Optional in all other states):** A factory specified installation produces a smoother and longer lasting garage door.
- Not Factory Installation:** An installer other than the factory may not have the expertise or take the time needed to meet a factory specified installation.
- Customization:** Our customers can request specific panel sizes, quantities, height of each section, tapered bottom / top sections, and reveal of frame around the door.
- Limited Customization:** Our competitors are not set up to accommodate customers' special requests.
- Complementing Entry Doors:** We can manufacture Entry Doors and Side Gates with single or multiple glass panels to match your Glass Garage Door. Custom Lock hardware can also be accommodated.
- No Complementing Entry Doors:** Our competitors are not set up to accommodate customers' special requests.



- |  |  |
|--|--|
| <p>➡ <b>Stainless Steel 11-gauge Hinges:</b> Laser cut, heavy duty hinges for an extra clean Architectural finish. Note: Stainless Hinges do not require lubrication.</p>  | <p>➡ <b>Standard Mild Steel Hinges:</b> Thinner 14 to 18 gauge galvanized hinges are weaker, may break under typical glass weights, and require constant lubrication.</p>  |
| <p>➡ <b>Stainless Steel Rollers:</b> Heavy Duty, sealed, water resistant rollers of 500lb load capacity each, with no lubrication required.</p>  | <p>➡ <b>Standard Metal or Nylon Rollers:</b> 50lb. load capacity each, non sealed, and require constant lubrication.</p>   |
| <p>➡ <b>Zinc Plated or Stainless Steel Springs:</b> Rust resistant and do not require lubrication.</p>   | <p>➡ <b>Standard Springs:</b> Raw oil tempered springs rust and require constant lubrication.</p>  |
| <p>➡ <b>Concealed Stiffening Struts:</b> Stronger, lighter, and are hidden as part of the door rail, which won't be seen from the outside.</p>   | <p>➡ <b>Standard Metal Struts:</b> Weak, heavy, surface mounted, and can be seen through glass. (See above, marked by arrows).</p>   |
| <p>➡ <b>Custom Glass and Frame Colors:</b> Over 200 types of custom glass, powder coated colors, and panels to choose from.</p>  | <p>➡ <b>Limited Glass and Color Options:</b> A few standard glazing types and color options.</p>   |
| <p>➡ <b>Architectural Weather Stripping:</b> Made from 3 part extruded aluminum, commercial Santoprene, and installed with concealed fasteners.</p>  | <p>➡ <b>Typical Residential Weather Stripping:</b> Made entirely of poor quality vinyl with exposed nails which rust.</p>  |
| <p>➡ <b>Custom Tapered Sections:</b> Top and/or bottom sections/panels for out of square driveways and openings. (See picture gallery)</p>   | <p>➡ <b>Standard Rectangular Sections:</b> May otherwise leave large gaps at the floor and header.</p>   |
| <p>➡ <b>Commercial Duty Hardware:</b> High capacity, long lasting, with minimum lubrication or service required.</p>   | <p>➡ <b>Standard Residential Hardware:</b> Low capacity, which wears out quickly; requiring constant lubrication, and costly service calls.</p>  |
| <p>➡ <b>Extremely Quiet Operation:</b> Due to the use of premium components, noise-causing friction is dramatically reduced.</p>   | <p>➡ <b>Typical Noisy Operation:</b> Attributed to cheap components, and out of square track; which cause friction and costly repairs.</p>   |
| <p>➡ <b>What Makes <del>be</del> the best:</b> In addition to the reasons above, proprietary fabrication methods and classified materials have been incorporated to produce our highly regarded glass doors.</p> | <p>➡ <b>Why Others Can't Compare:</b> Manufacturers that mass-produce a wide variety of other types of doors are catering to a less discriminating market. In most cases, quality is compromised for quantity.</p> |

**You get what you pay for!** Quality engineered and tested designs for over 55 years in business!

#### **Additional Options:**

- 300 + Powder Coated, Wood Grained, and Kynar Finishes over Anodized Aluminum Frames
- Fully Insulated Frame (US and Int'l Pat. Pend.- to meet Building / Energy Code and NFRC ratings)
- Insulated, Laminated, Tempered, Obscured, Transparent, and Poly Sealed Panels in Various Colors
- NFRC Air & U-Value Infiltration, ASTM - Water Resistant, and HVHZ, Wind / Impact - Rated Doors
- Matching Entry Doors, Side Gates, & Drive Gates (California Residents Only!)
- Custom Designs, Configurations, Shop Drawings, and Other Custom Options (Upon Request!)
- Perimeter Weather Stripping (2-Part Alum. w/ Santoprene) AND/OR Solid Aluminum Thresholds
- Tapered Bottom Sections (for un-level floors) & Aux. Hat Struts (doors over 18'ft or 800lbs)
- Side Mount, Manual Chain Hoist, and Various Electric Operators; (Depending on Track Type!)
- Aluminum or Stainless Steel Cladding (Mounted on Outside Perimeter of Door Openings)
- Stainless Steel Track, Stainless Springs w/ Hardware, Powder Coated Track, or Various Combo's
- Hurricane Rated Doors with Miami / Dade NOA! Large Missile, Small Missile, +/- 65psf & +/- 50 psf