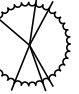








Plant Materials

Key	Qty	Species	Common Name	Size
	6	Psuedotsuga menziesii	Douglas Fir	4-5'
	16	Erica 'Darley Dale'	Heather var.	1 gal.
	9	Ilex crenata 'No. Beauty'		2 gal.
	14	Lavandula ang. 'Hidcote'	Lavender var.	1 gal.
	17	Miscanthus sin. 'Little Miss'	Maiden Grass var.	1 gal.
	10	Myrica californica	Calif. Bay Laurel	2 gal.
	14	Rosa rugosa		1 gal.

50' Roadside Buffer Required for Hwy 305 Corridor

54 Trees required (267'x50/250=54)
38 Evergreen (54x.7=38)
16 Deciduous (54x.3=16)

75 Trees provided (existing)
43 Evergreen
32 Deciduous

20' Perimeter Buffer Required for South Property Line

23 Trees required (229'/10=23)
16 Evergreen (23x.7=16)
7 Deciduous (23x.3=7)

27 Trees provided (existing + new)
16 Evergreen
11 Deciduous

Notes:

All trees on site to be retained.
All perimeter buffers to be maintained.
All parking lot landscaping to be maintained.

Amend all plantings areas with 3" of compost
e.g. cedar groves compost or gro-co.

Mulch all planting beds with 3" wood or bark mulch.

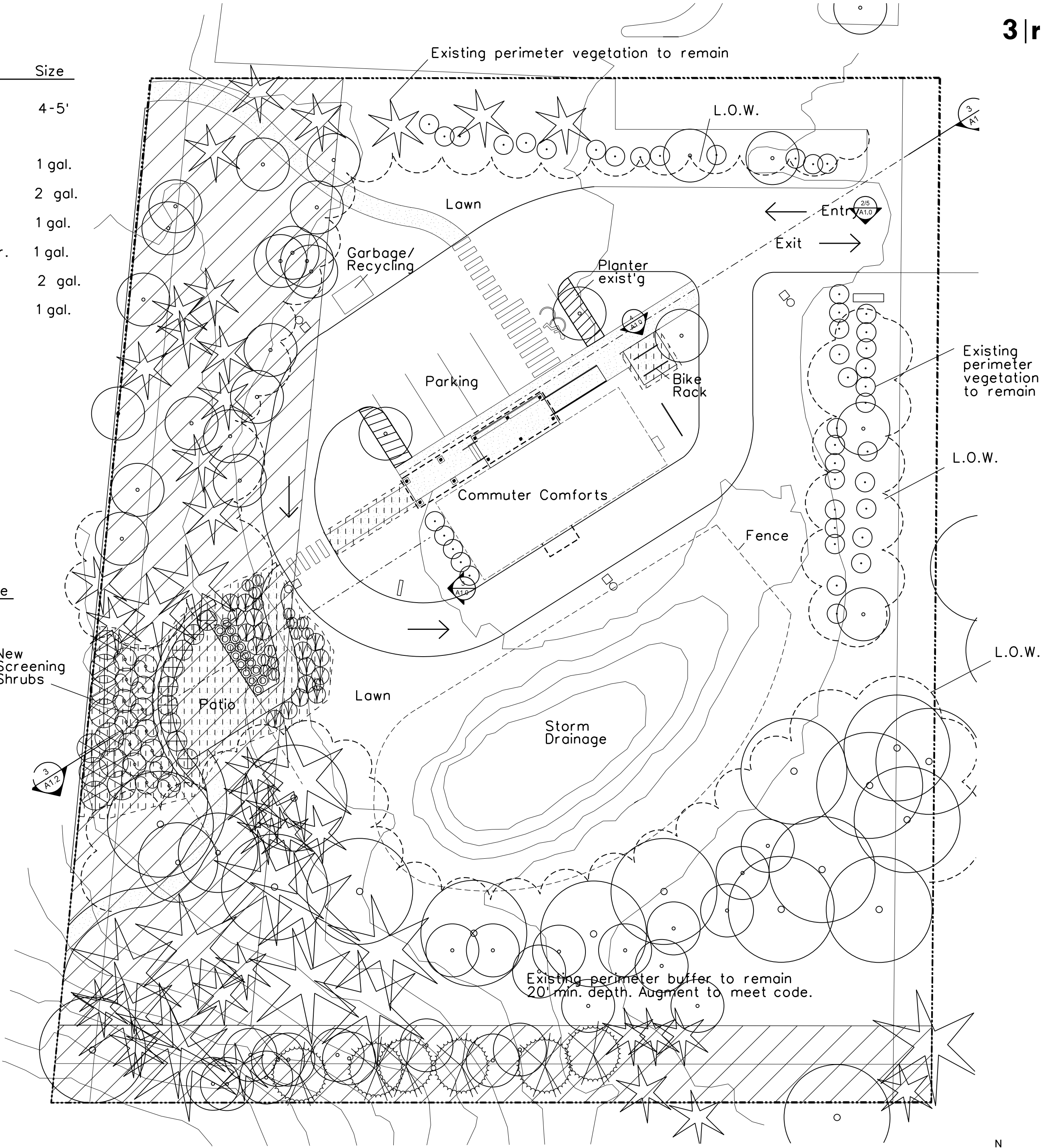
Provide establishment irrigation for new plantings

Provide sleeves for piping under paths to
access all planting areas.

Plant substitutions are o.k. if confirmed
by landscape architect.

Avoid planting in summer months.

For tree and buffer zone protection do not work
beyond the limit of work (LOW). Designate the L.O.W.
with construction fencing. Protect trees
within the L.O.W. with perimeter fencing - 1' for
every 1" d.b.h.



1 LANDSCAPE PLAN
SCALE: 1"=20'-0"

265 Winslow Way East
Suite 202D
Bainbridge Island
Washington 98110

telephone
206 842 1253

e-mail
frank@3rkarchitecture.com



TGLA, LLC
Landscape Architect

CONSULTANTS:

COMMUTER COMFORTS
617 HIGH SCHOOL ROAD
BAINBRIDGE ISLAND WA
98110

LANDSCAPE PLAN

SCALE:
ISSUE DATE: 12/20/17
REVISIONS: 2/2/18

A1.1